

Let your journey begin...

# Achieve more together through group coaching!

**POWER2**  
progress

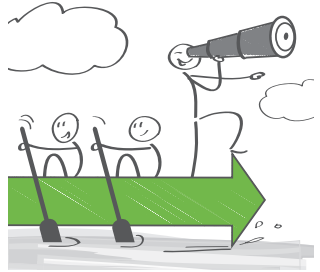
Benefit from being part of a focused group of like-minded business people. By working collaboratively, you will help each other to focus on what's important. You'll learn and grow together.

## Why should I consider group coaching?

Leading a business or team can be demanding and often quite lonely as you need to constantly be the best you can possibly be. Group coaching sessions give you the opportunity to talk to people at the same level as you with similar experiences. It also gives you much needed distance so you can effectively reflect on your situation.

We have three levels of group coaching available to help you obtain the right support for you. Whether you join Business Boost, Peak Performance or Corporate Champions, you'll develop close professional relationships with the people in your group. You'll grow as a group and a natural support network will evolve.

We've also added lots of other benefits of joining the group coaching programme, such as tailored seminars and training courses as well as access to our two day Power2Lead residential programme.



Contact Anjana for more information:  
anjana@power2progress.co.uk | 01933 667729



# Which group is right for you?

## Business Boost

- Aimed at business owners and directors with up to two staff.
- 6 month growth programme.
- Regular half-day meetings.
- Email support.
- Choose one Power2Progress half-day training session.
- Private Facebook group.

£150+VAT per month

## Peak Performance

- Aimed at directors and managing directors and senior leaders with teams.
- 12 month growth programme.
- Up to 6 people per group.
- Regular half-day group meetings including lunch.
- Two day Power2Lead residential course at a 4\* location, all inclusive.
- Psychometric profiling.
- 360 feedback as appropriate.
- Leadership and management training & tips.
- 1:1 coaching.
- Resources to grow your business monthly email.
- Email and telephone support.
- Private LinkedIn group.

£550+VAT per month

## Corporate Champions

Bespoke coaching tailored to you company, which may include:

- Aimed at heads of department and senior leaders.
- 12 month growth programme.
- Up to 6 people per group - this could be exclusively from your organisation.
- Regular half-day group meetings including lunch.
- Two day Power2Lead residential course at a 4\* location, all inclusive.
- Psychometric profiling.
- 360 feedback.
- Leadership and management training & tips.
- 1:1 coaching.
- Resources to grow your business monthly email.
- Email and telephone support.

Price on application

